

## 扭力限制器 Torque Limiter

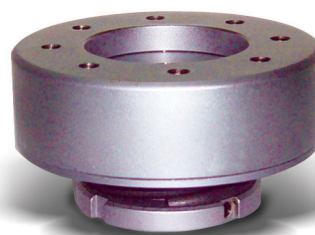
### 精密定位扭力限制器 / Accuracy Positioning Type



#### ● STF系列 / STF Series

STF 法蘭型系列附有法蘭面，可裝配平台、齒輪、鏈輪使用，此項過負荷保護，針對旋轉垂直方向出力有效，在正常使用下，可精確傳達扭力，且無背隙減少動作上的耗損。

STF Series, the flanged type, can be used to platform, gear and sprocket. It provides overload protection to rotationwise and verticalwise power output. In normal usage, it can precisely transmit torque, and lower the loss of drive without backlash.



#### ● STC系列 / STC Series

STC聯軸型系列適用於軸與軸聯結，此項過負荷保護，針對旋轉垂直方向出力有效，具備吸收軸與軸之間排列落差特性。

STC Series, the coupling type provides shaft-to-shaft connection, and overload protection to rotationwise and verticalwise power output. It can absorb the shaft-to-shaft misalignment.

## 扭力限制器精度 Accuracy of Torque Limiter

	ST4F~ST5F	ST6F~ST18F	ST4C~ST5C	ST6C~ST18C
定位精度 Accuracy of Positioning	1~2mim	30sec	1~2mim	30sec
重現精度 Accuracy of Repeatability	30sec	15sec	30sec	15sec

## 選用方式 Ordering Specification

